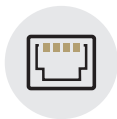


AUTOMATE®

AC-RS485 6Nm

Easy Installation. Hard wired. Electronic Limits.
The AC Motor can seamlessly integrate across any RS485 enabled system. Full control at each motor head, allowing for a fully configurable system.



RS485 CONTROL

Easy wiring setup and with electronic limits



INTEGRATION FLEXIBILITY

Motors can be incorporated into any home automation system, irrespective of the brand.



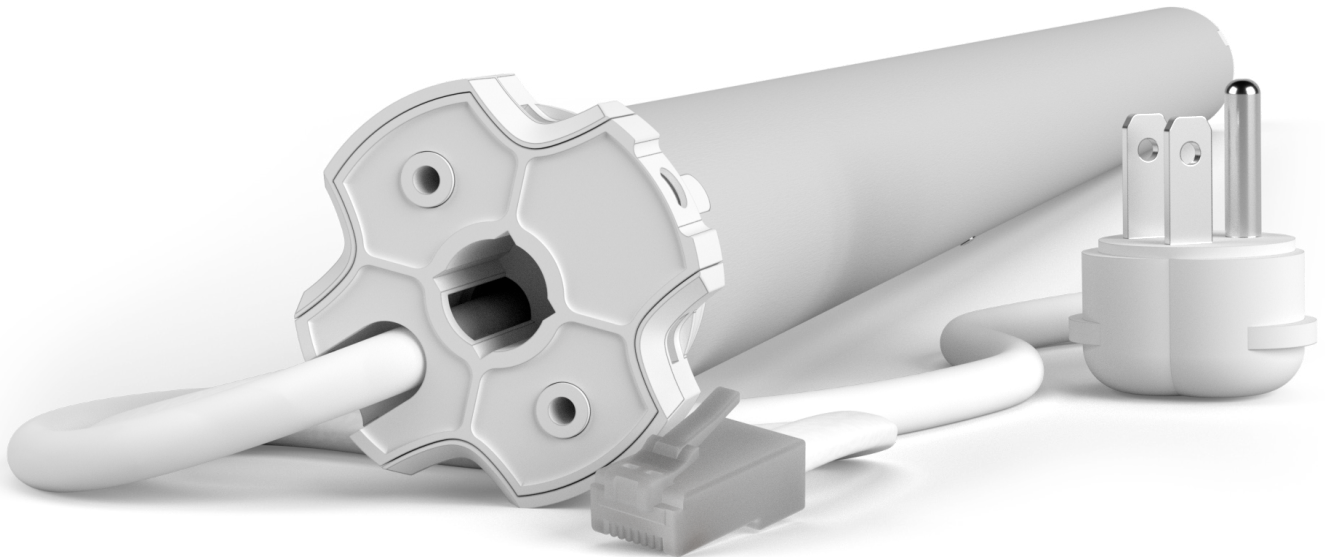
SIMPLIFIED SETUP

Automate programming instructions are streamlined to have your shades moving as quickly as possible.



RELIABLE OPERATION

No interference from other devices to prevent the motor from operating.



ARC™ (Automate Radio Communication) is Rollease Acmeda's proprietary technology utilizing 433MHz radio communication with bi-directional feedback that brings Automate motorized shading systems together.

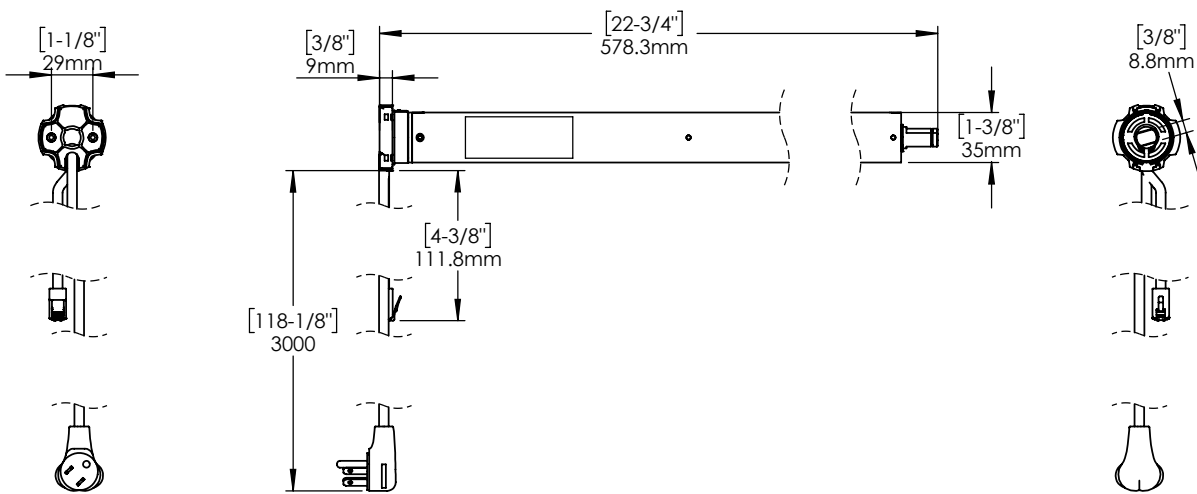
A Division of Rollease Acmeda

Product Specifications

Part #: MT01-1135-069002 Automate | AC RS485 6NM Motor [Ø35/120V/33RPM]

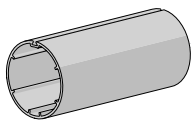
Voltage	110-120V (US)	Ip Rating	IP44
Torque	6.0Nm	Limit Switch Type	Electronic
Max Run Time	4 min	Current	0.85A
Speed	33 RPM	Temp working Range	32°F to 140°F (0°C to 60°C)
Sound Level	44 DB	Insulation Class	III

Dimensions

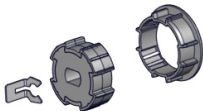


Compatible Parts

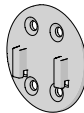
Tubes



Crown & Drives



Adaptors



2" Ribbed Tube	MTCRDR-35-2
S45 - Light	MTCRDR-35-S45
S45 - Std	
S45 - HD	
40mm Octagonal (3rd party product)	VB40-0306-050408 & MTCR-35-2-OCT

- MTAD-252835-SL
- MTAD-25-28-SLV2W
- RB40-1402-069400