

# AUTOMATE.®

## EL Motor Q6

Seamless integration. Effortless installation. Reliable performance.

The Electronic Limit (EL) motors offer compatibility with existing components, simplified shade setup, and hardwired stability for reliable operation, making them ideal for residential and commercial environments.



### Convenient Integration

The EL motors can be seamlessly integrated with any existing Building Management System (BMS) using the 4 Channel Motor Controller.



### Simplified Programming

Quick and easy shade setup with the 4 Channel Motor Controller using a simple limit-setting tool, eliminating the need for complicated manual adjustments.



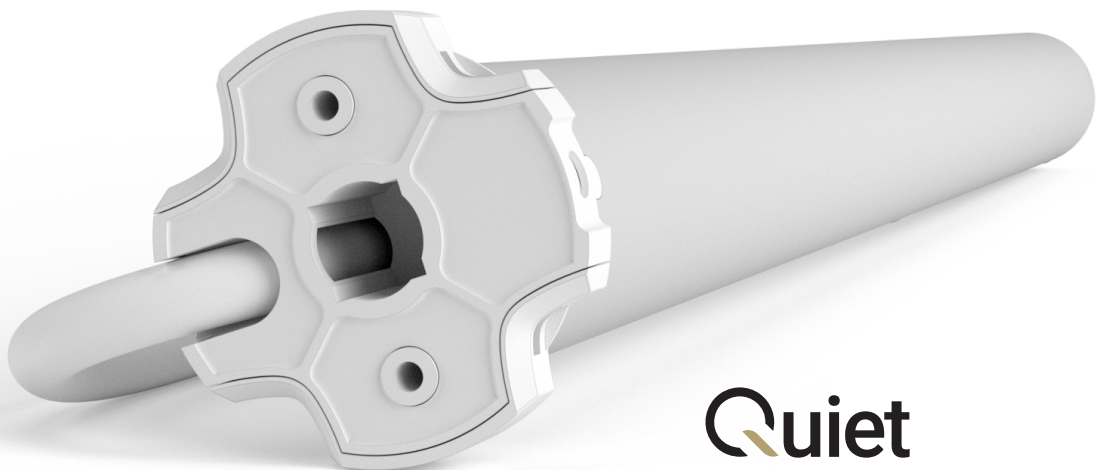
### Seamless Upgrades

Swap out mechanical motors effortlessly, with no need for new parts or reinstallation, thanks to the identical fitment of the EL motors.



### Enhanced Reliability

The hardwired nature of the EL motors ensures reliable operation with no risk of RF interference from other devices, making them a stable choice for the 4 Channel Motor Controller.



## Quiet

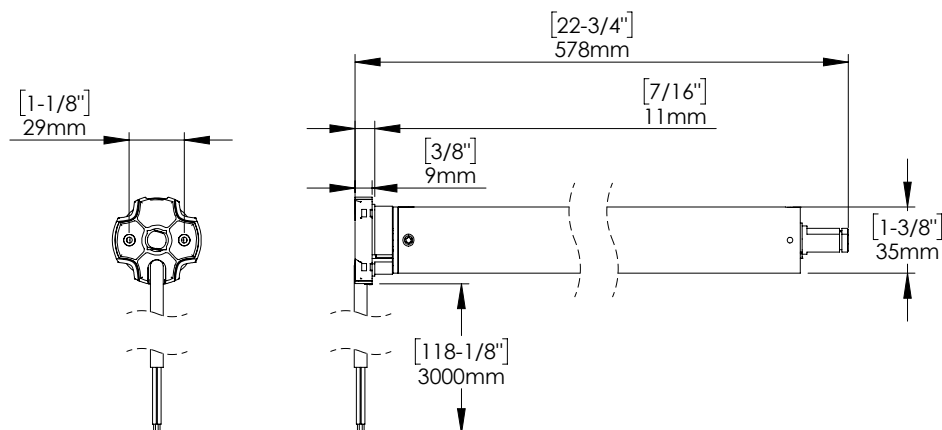
7 YEAR WARRANTY

# Product Specifications

Part #: MT01-1035-069001 Automate | AC EL Q Motor [35mm/6.0Nm/33rpm]

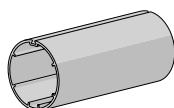
Voltage	120 V ac	Limit Switch Type	Electronic
Torque	6.0 Nm	Current	0.53 A
Max Run Time	4 minutes	Temp Working Range	14°F to 122°F (-10°C to 50°C)
Speed	33 rpm	Insulation Class	B
IP Rating	IP44	Sound Level	~35 dB
Power	121 W		

## Dimensions

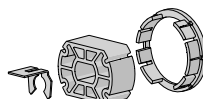


## Compatible Parts

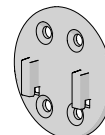
### Tubes



### Crown & Drives



### Adaptors



2" Ribbed Tube	MTCRDR-35-2
S45 - Light	MTCRDR-35-S45
S45 - Std	
S45 - HD	
40mm Octagonal (3rd party product)	VB40-0306-050408 & MTCR-35-2-OCT

- MTAD-252835-SL
- MTAD-25-28-SLV2W
- RB40-1402-069400

## Compatible Systems

- Skyline Roller Shades
- S45 Roller Shades

## Compatible Accessories (refer to catalog for full item listings)

### Controllers

