

AUTOMATE.®

5V Li-ion Q6.0

Rechargeable. Battery-powered. Efficient installation.
This wire-free motor's built-in rechargeable lithium-ion battery is perfect for medium to large shade applications.



Bi-directional Communication

Automate Radio Communication utilizes two-way communication to provide up-to-date feedback on battery levels and shade positioning via the Automate Shades App.



Adjustable Speed Control

Three shade speed settings to suit your needs – faster for larger shades, slower for smaller. Features quiet operation when set to the lowest speed setting.



Simplified Setup

Whether using a remote control or app for shade setup, Automate programming instructions are streamlined to have your shades moving as quickly as possible.



Favorite Positioning

Add a programmable shade position in addition to the upper and lower limits that can be defined as your "favorite".



Precise Limit Adjustment

Incremental steps during limit setting allows for precise positioning of the shade.



Battery Check Action

When paired with a remote, motor will move shade to indicate battery percentage.



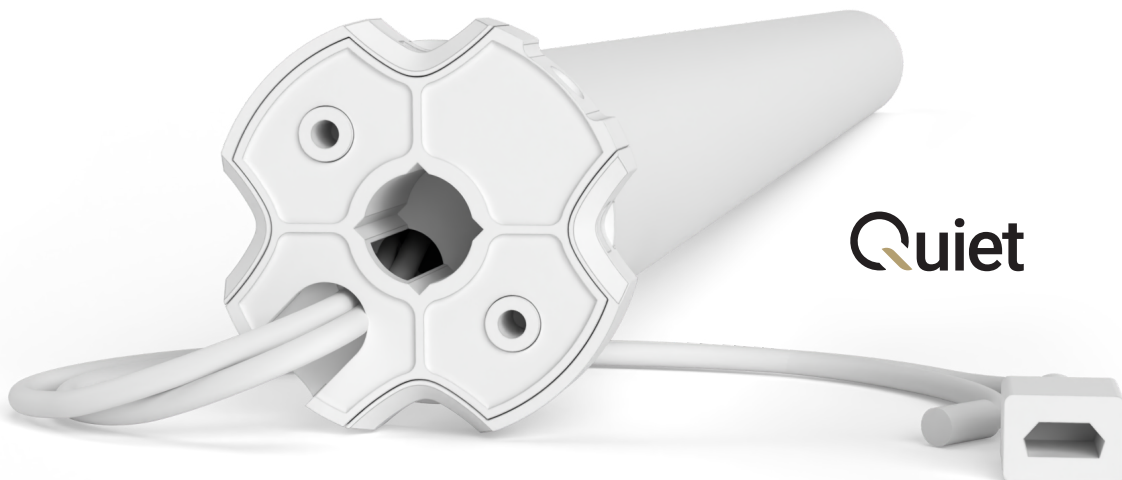
Micro USB Charging

Custom motor charger not required. Utilize any micro USB cable and charger to renew battery.



Quiet Operation

Superior acoustic performance makes this our quietest motor range yet.



Quiet

5 YEAR WARRANTY

ARC

ARC® (Automate Radio Communication) is Rollease Acmeda's proprietary technology utilizing 433MHz radio communication with bi-directional feedback that brings Automate motorized shading systems together.

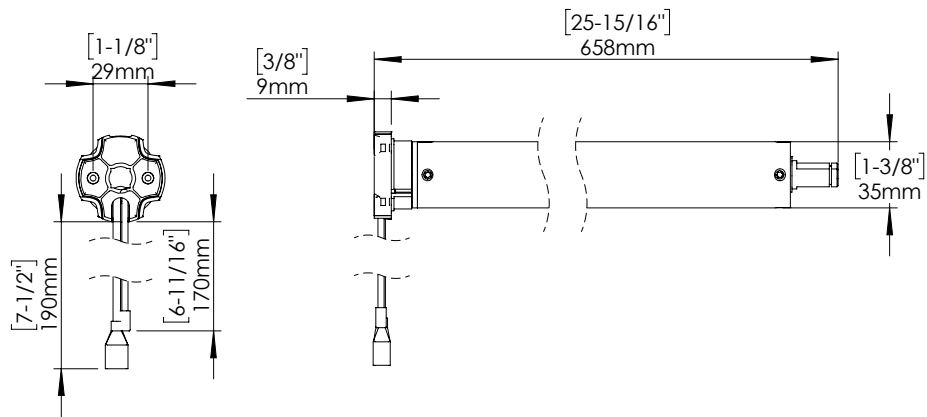
A Division of Rollease Acmeda

Product Specifications

Part #: MT01-1335-069002 Automate | Li-ion 6Nm Q Motor [Ø35/5V/24RPM]

| | | | |
|-----------------|---------------------------------|--------------------|-----------------------------|
| Voltage | 5 V dc | Limit Switch Type | Electronic |
| Torque | 6.0 Nm | Current | 3.2 A |
| Max Run Time | 12 minutes | Battery Capacity | 5200 mAh |
| Speed | 24 rpm (Adjustable to 16 or 20) | Temp Working Range | 32°F to 140°F (0°C to 60°C) |
| Radio Frequency | 433.92 MHz | Insulation Class | III |
| RF Modulation | FSK | Sound Level | ~34 dB |
| IP Rating | IP44 | Power | 38 W |

Dimensions



Compatible parts

Tubes



Crown & Drives



Adaptors



| | |
|---------------|------------------|
| 2.0" | MT03-0111-050003 |
| 40mm OCT tube | MTCRDR-35-2-OCT |
| S45 Tubes | MTCRDR-35-S45 |

- MTAD-252835-RS
- MTAD-252835-SL
- MTAD-25-28-SLV2W
- RB40-1402-069400

Compatible Systems

- Skyline Shades
- S45 Shades
- R Series Shades

COMPATIBLE PRODUCTS (refer to catalog for full item listings)

Controllers



Pulse & App



Push Remotes

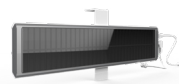


Wall Switch

Charging Options



5V Charger



Solar Panel

Sensors



Internal Sun Sensor