

**S45 AUTOMATE 1.1Nm | 25mm**

The motorized 25mm 1.1Nm S45 roller shade system offers two motors for multiple tube diameters to suit a variety of applications. Featuring ARC (Automate Radio Communication), the motorized 25mm 1.1Nm S45 system provides an intelligent, Li-ion battery powered solution.

**AESTHETICAL FEATURES**

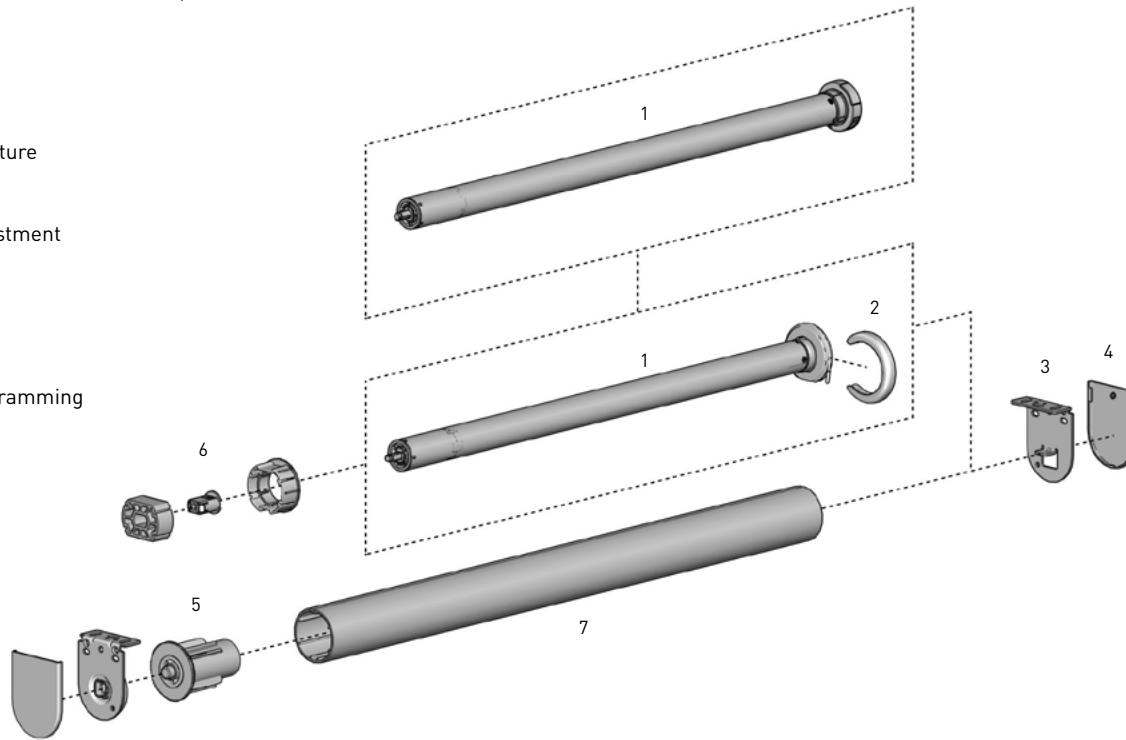
- Thinner Motor Head
- Recessed mounting hooks

**PRODUCTION & ASSEMBLY FEATURES**

- Greater flexibility with installation with spring loaded pin end
- Crown, drive and adapters available to suit multiple tube sizes
- Smaller Motor end deduction

**FUNCTIONAL BENEFITS**

- 5V Micro USB Charging
- Antennae Wire Retention Feature
- Levelling control
- Simple limit setting and adjustment
- Favorite position
- 3 operational speed settings
- 2-WAY RF communication
- ARC protocol for simple programming



**SYSTEM INDEX**

	Automate Motor   25mm MT01-1325-069003 - Li-ion 1.1 ZERO
1	MT01-1325-069005 - Li-ion 1.1 ZERO (SHORT) MTDCRF25-1.1 - DCRF 1.1
2	Motor Cap MT03-0205-xxx001 - Li-ion ZERO ONLY
3	Brackets RB09-0352-xxx0XX - Li-ion ZERO Brackets RB40-9355-xxx0XX - DCRF Brackets
4	Bracket Covers RB08-4151-xxx0XX RB08-4152-xxx0XX
5	Pin End RB09-0245-xxx001
6	Crown & Drive Set   25mm DC MTCRDR-25-S45
7	T-Spline Aluminum Tubes RB93-044#-000490 - Light RB93-644#-000490 - STD

# = Size  
xxx = Color  
X = catalogue options

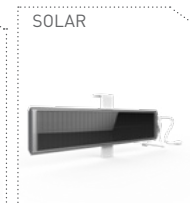
**COLOUR RANGE**



**SYSTEM UPGRADES**

- CF90 CASSETTE
- CF90 EDGE
- LINK SYSTEM

**CONTROL OPTIONS**

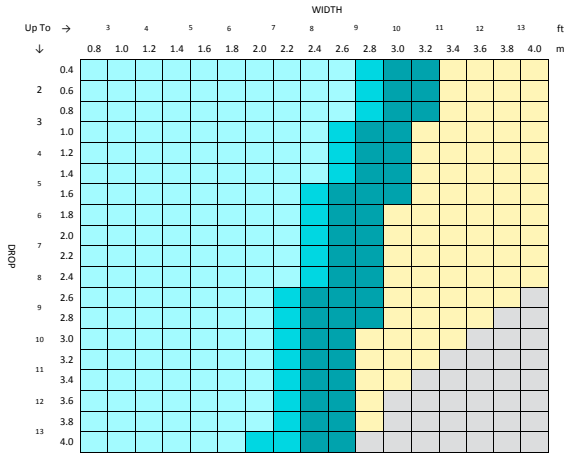


**PRODUCT OPTIONS**



**SPECIFICATIONS**

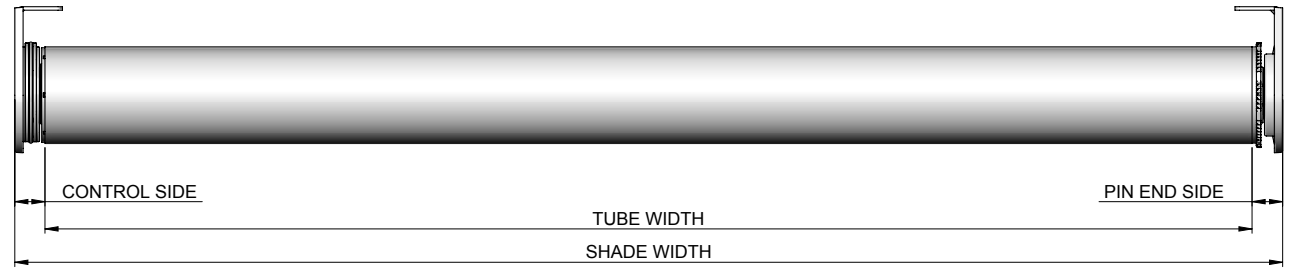
**SYSTEM CAPACITY**



Fabric Thickness: 0.024" [0.60mm]  
 Fabric Density: 12.39oz/yd<sup>2</sup> [420gsm]  
 Weight Bar: D30 Silent Medium Aluminium Bottom Rail

CONTROL	TUBE	LINK SYSTEM
25mm Motor	S45 LIGHT	1.5" ONLY
	S45 STANDARD	
	S45 HEAVY DUTY	
	OUTSIDE SPECIFICATIONS	

**DEDUCTION CHART**

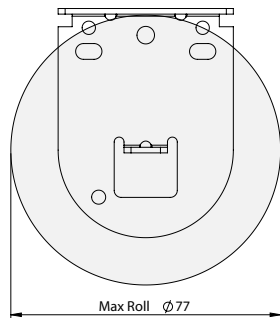


MOTOR	TORQUE	BRACKETS	LIGHT GAP			MINIMUM SHADE WIDTH
			CONTROL END	PIN END	OVERALL	
MT01-1325-069003* MT01-1325-069005*	1.1Nm	With Covers	0.59" [15mm]	0.55" [14mm]	1.14" [29mm]	2.15' [0.655m]
		No Covers	0.51" [13mm]	0.51" [13mm]	1.02" [26mm]	1.90' [0.580m]
With Covers		0.63" [16mm]	0.55" [14mm]	1.18" [30mm]	1.38' [0.480m]	
No Covers		0.55" [15mm]	0.51" [13mm]	1.10" [28mm]		

\* MOTOR IS SUITABLE FOR RETROFIT INSTALLATION IN EXISTING RB09, RB08 & RB07 SYSTEMS. EXTEND THE MKII IDLER 2MM FOR RB08 & RB07 RETROFIT INSTALLATIONS.

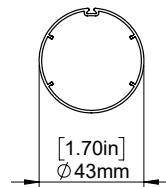
TUBE DEDUCTION = BLIND WIDTH - (CONTROL END LIGHT GAP + PIN END LIGHT GAP)

**MAX ROLL**



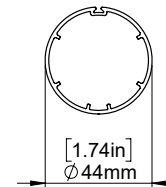
BRACKET	MAX ROLL SIZE
RB09-0352-xxx040	3.03" [77mm]
RB40-9355-xxx040	3.03" [77mm]

**TUBE SPECS.**



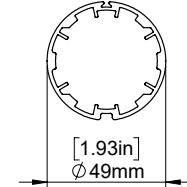
S45 Light Tube

Code: RB93-0443-000490  
 w. tape RB93-6443-000490  
 Length 16' [4.88m]



S45 STD Tube

Code: RB93-0444-000490  
 w. tape RB93-6444-000490  
 Length 16' [4.88m]



S45 HD Tube

Code: RB93-0449-000490  
 w. tape RB93-6449-000490  
 Length 16' [4.88m]

MOTOR	MAX LIFTING CAPACITY			MAX DROP**
	S45 LT	S45 STD	S45 HD	S45
1.1Nm	11.46lbs [5.2kg]	11.24lbs [5.1kg]	10.14lbs [4.6kg]	13.12' [4m]

\*\* Exceeding this value may cause fabric tracking issues