

R-Series 3.0Nm & 6.0Nm | 35mm

The 35mm 3.0Nm R-Series roller shade system offers a motorized solution to suite a variety of applications. Featuring ARC (Automate Radio Communication), the 35mm 3.0Nm R-Series system provides an intelligent, Li-ion battery powered solution.

AESTHETICAL FEATURES

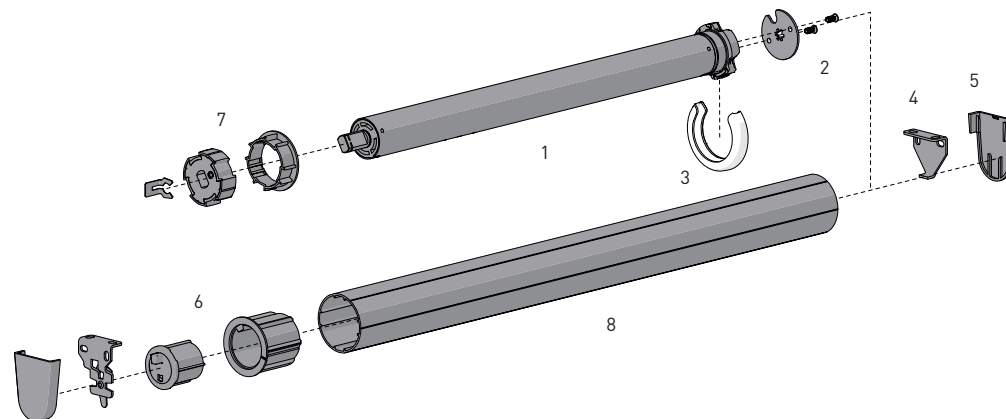
- Slim motor head for minimal light gap
- Motor cap to color match with brackets

PRODUCTION & ASSEMBLY FEATURES

- Suitable to a variety of applications

FUNCTIONAL BENEFITS

- 5V micro USB charging
- Levelling control
- Simple limit setting and adjustment
- Favorite position
- 3 operational speed settings
- 2-WAY RF communication
- ARC protocol for simple program



SYSTEM INDEX

| | |
|---|--|
| 1 | Automate Motor 35mm MT01-1335-069001 - 5V Li-ion 3.0 MTDCBRF35-3 - 12V Li-ion 3.0 MTDCRF35-3 - 12V DCRF 3.0 MTACRF35-6 - 12V ACRF 6.0 MTACQRF35-6 - 12V ACRF Q6 |
| 2 | Motor Adaptor + Screws MTAD-252835-RS + SLAMSCREW |
| 3 | Motor Cap MTCAP-25-BK - Black MTCAP-25-W - White MTCAP-25-AB - Antique Bronze MTCAP-25-SN - Satin Nickel |
| 4 | Brackets RB360xx RB380xx RB390xx |
| 5 | Bracket Covers RBPC360xx RBPC380xx |
| 6 | Pin End & Adaptor REP53xx + RA2 |
| 7 | Crown and Drive Kit MTCRDR-35-2 |
| 8 | Aluminum Tube RTEA5T## - 2" tube |

- Size
xxx= Color

COLOR RANGE



CONTROL OPTIONS

REMOTES



WALL SWITCH



SMART HOME



PULSE

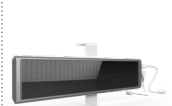


CHARGERS

ELECTRIC



SOLAR



OPTIONS

SUN SENSOR

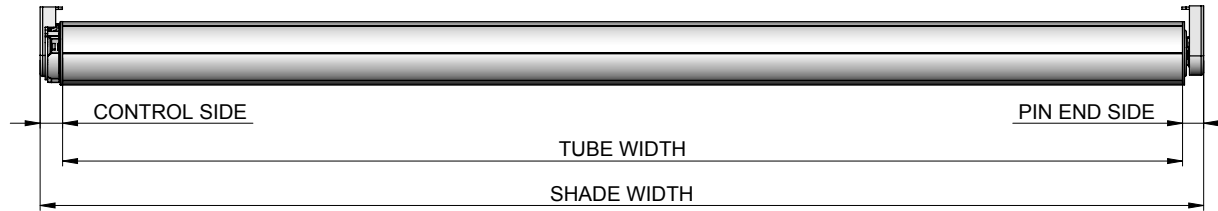


SYSTEM UPGRADES

- CASSETTE 80/100/120
- FASCIA 3"/4"/5"
- LINK SYSTEM
- POCKETS 3"/4"/5"/6"

SPECIFICATIONS

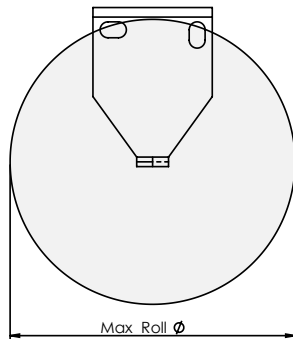
DEDUCTION CHART



| MINIMUM SHADE WIDTH | |
|---------------------|----------------|
| MT01-1335-069001 | 3.01' [0.935m] |
| MTDCBRF35-3 | 3.01' [0.935m] |
| MTDCRF35-3 | 1.76' [0.535m] |
| MTACRF35-6 | 2.15' [0.655m] |
| MTACQRF35-6 | 2.02' [0.615m] |

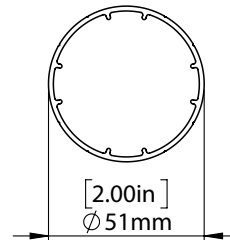
| TUBE | MOTOR | BRACKETS | LIGHT GAP | | |
|------|--|-------------|--------------|--------------|--------------|
| | | | CONTROL END | PIN END | OVERALL |
| 2" | MT01-1335-069001 MTDCBRF35-3 MTDCRF35-3 MTACRF35-6 MTACQRF35-6 | With Covers | 0.71" [18mm] | 0.67" [17mm] | 1.38" [35mm] |
| | | No Covers | 0.63" [16mm] | 0.59" [15mm] | 1.22" [31mm] |

MAX ROLL



| BRACKET | MAX ROLL SIZE |
|---------|---------------|
| RB360xx | 2.57" [69mm] |
| RB380xx | 3.65" [92mm] |
| RB390xx | 4.00" [101mm] |

TUBE SPECS.

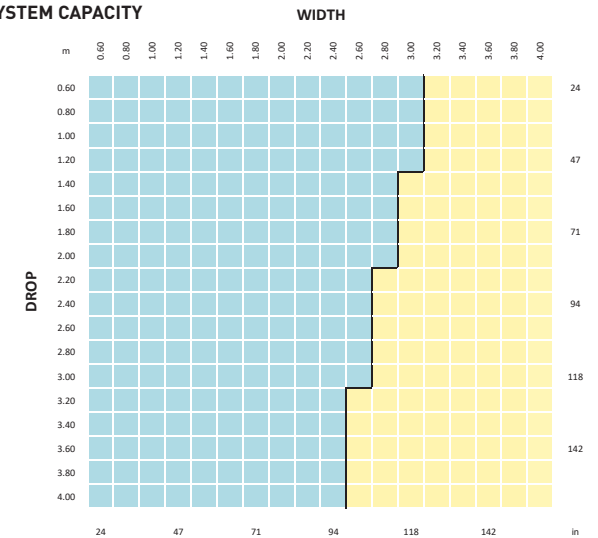


2" Tube
 Code: RTEA5T12 (with tape)
 RTEA5U12
 RTEA5T16 (with tape)
 RTEA5U16
 Length: 12' 16"
 [3.66m, 4.88m]

| MAX LIFTING CAPACITY | | MAX DROP* |
|----------------------|------------------|---------------|
| MOTOR | 2" TUBE | |
| 3.0Nm | 26.4lbs [12.0kg] | 13.1' [4m] |
| 6.0Nm | 52.9lbs [24.0kg] | |

* Recommended Max Drop. Exceeding this value may cause fabric tracking issues

SYSTEM CAPACITY



PARAMETERS
 FABRIC DENSITY: 420gsm
 FABRIC THICKNESS: 0.6mm
 WEIGHT BAR: D30 Medium Bottom Rail
 CONTROL: 3.0Nm & 6.0Nm MOTORS