

R-Series 2.0Nm | 28mm | 12V

The motorized R-Series roller shade system offers two Automate motors for two tube diameters to suit a variety of applications. Featuring ARC (Automate Radio Communication), the 28mm R-Series Automate system provides an intelligent, Li-ion battery, AC, or a DC powered solution.

AESTHETIC FEATURES

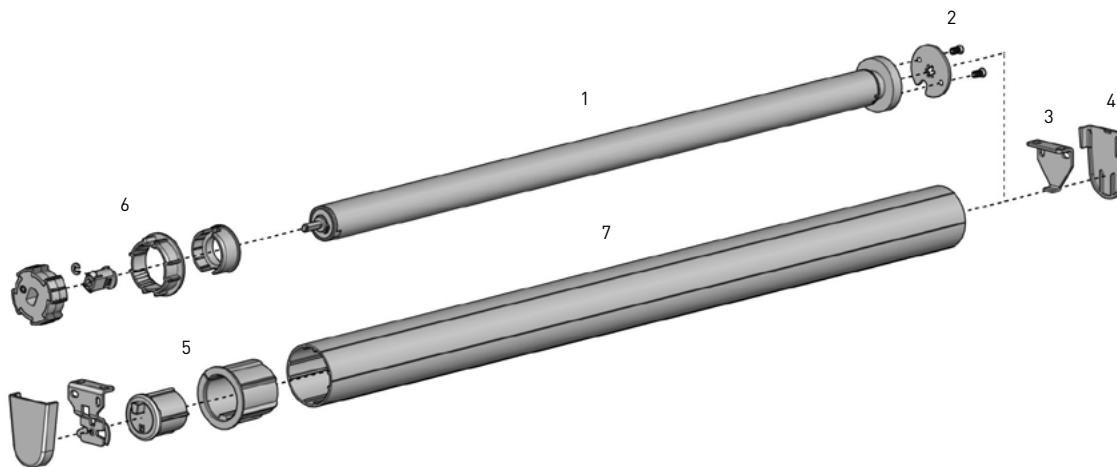
- Slim motor head for minimal light gap

ASSEMBLY / PRODUCTION FEATURES

- Crown, drive and adapters available to suit variety of tube sizes

FUNCTIONAL BENEFITS

- Leveling control
- Simple limit setting and adjustment
- Favorite position
- 3 operational speed settings
- 2-way RF communication
- ARC protocol for simple programming

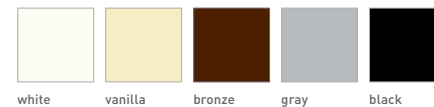


SYSTEM INDEX

1	Automate Motor 28mm MTDCBRFQ28-2.0 - Li-ion Q2.0 MTDCRFQ28-2.0 - DCRF Q2.0
2	Motor Adaptor + Screws MTAD-252835-RS + SLAMSCREW
3	Brackets RB360xx - R8 1½" Set RB380xx - R8 2" Set RB390xx - R8 2-7/8" Set
4	Bracket Covers RBPC360xx RBPC380xx
5	Pin End + Adapter REP53xx - for 1½" tube REP53xx + RA2xx - for 2" tube
6	Crown and Drive Kit MTCRDR-28-1.5 - Kit for 1½" tube MTCRDR-28-2 - Kit for 2" tube
7	Aluminum Tube RTEA4T## - 1½" tube RTEA5T## - 2" tube
8	Aluminum Tube RTEA3T## - 1¼" tube RTEA4T## - 1½" tube

- Size
xxx= Color

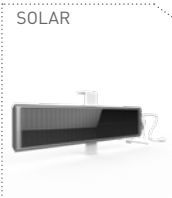
COLOR RANGE



SYSTEM UPGRADES

- CASSETTE 80/100/120
- FASCIA 3"/4"/5"
- LINK SYSTEM
- POCKETS 3"/4"/5"/6"

CONTROL OPTIONS

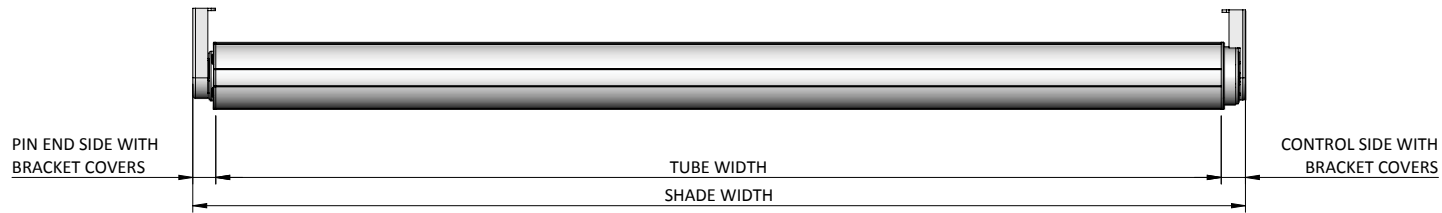


PRODUCT OPTIONS



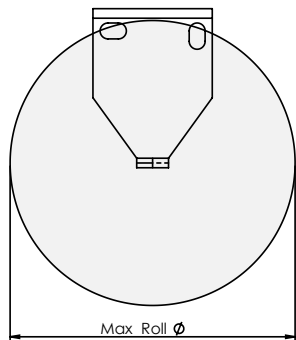
SPECIFICATIONS

DEDUCTION CHART



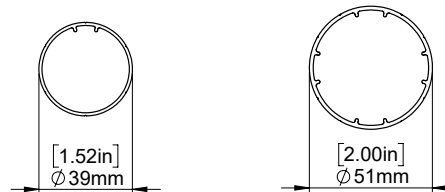
MOTOR	TUBE	BRACKETS	LIGHT GAP			MINIMUM SHADE WIDTH	
			CONTROL END	PIN END	OVERALL		
MTDCBRFQ28-2 MTDCRFQ28-2	1½"	With Covers	0.75" [19mm]	0.71" [18mm]	1.46" [37mm]	MTDCBRFQ28-2	2.60' [0.800m]
		No Covers	0.67" [17mm]	0.63" [16mm]	1.30" [33mm]		
	2"	With Covers	0.75" [19mm]	0.67" [17mm]	1.42" [36mm]	MTDCRFQ28-2	2.00' [0.600m]
		No Covers	0.67" [17mm]	0.59" [15mm]	1.26" [32mm]		

MAX ROLL



BRACKET	MAX ROLL SIZE
RB360xx	2.57" [69mm]
RB380xx	3.65" [92mm]
RB390xx	4.00" [101mm]

TUBE SPECS.



1½" Tube

Code: RTEA4T12 (with tape)
RTEA4U12
RTEA4T16 (with tape)
RTEA4U16

Length 12', 16'
(3.66m, 4.88m)

2.0" Tube

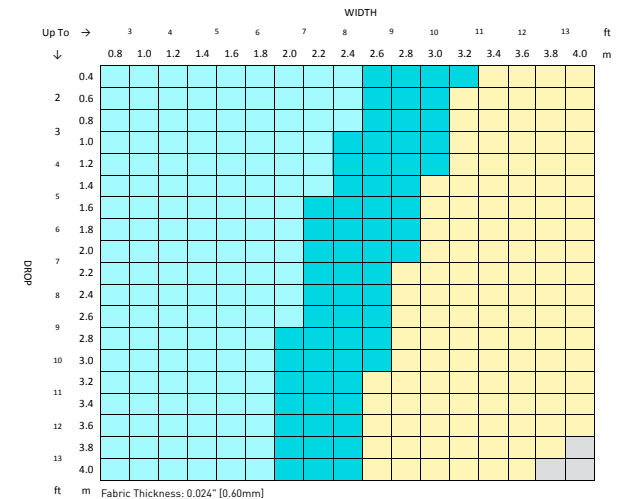
Code: RTEA5T12 (with tape)
RTEA5U12
RTEA5T16 (with tape)
RTEA5U16

Length 12', 16'
(3.66m, 4.88m)

1½" TUBE		2" TUBE	
Ø WIDTH	MAX DROP	Ø WIDTH	MAX DROP
7.87' [2.40m]	2.62' [0.80m]*	10.50' [3.20m]	1.31' [0.40m]*
5.91' [1.80m]	13.12' [4.00m]*	7.87' [2.40m]	13.12' [4.00m]*

* Recommended Max Drop. Exceeding this value may cause fabric tracking issues

SYSTEM CAPACITY



Fabric Thickness: 0.024" [0.60mm]
Fabric Density: 12.39oz/yd² [420gsm]
Weight Bar: D30 Silent Medium Aluminium Bottom Rail

CONTROL	TUBE	LINK SYSTEM
28mm Motor	RTEA4T## - 1.5"	OUTSIDE SPECIFICATIONS
	RTEA5T## - 2.0"	

R-Series 2.0Nm | 28mm

The motorized 28mm 2.0Nm R-Series roller shade system offers multiple tubes to suit a variety of applications. Featuring ARC (Automate Radio Communication), the 28mm 2.0Nm R-Series system provides an intelligent Li-ion battery powered solution.

AESTHETICAL FEATURES

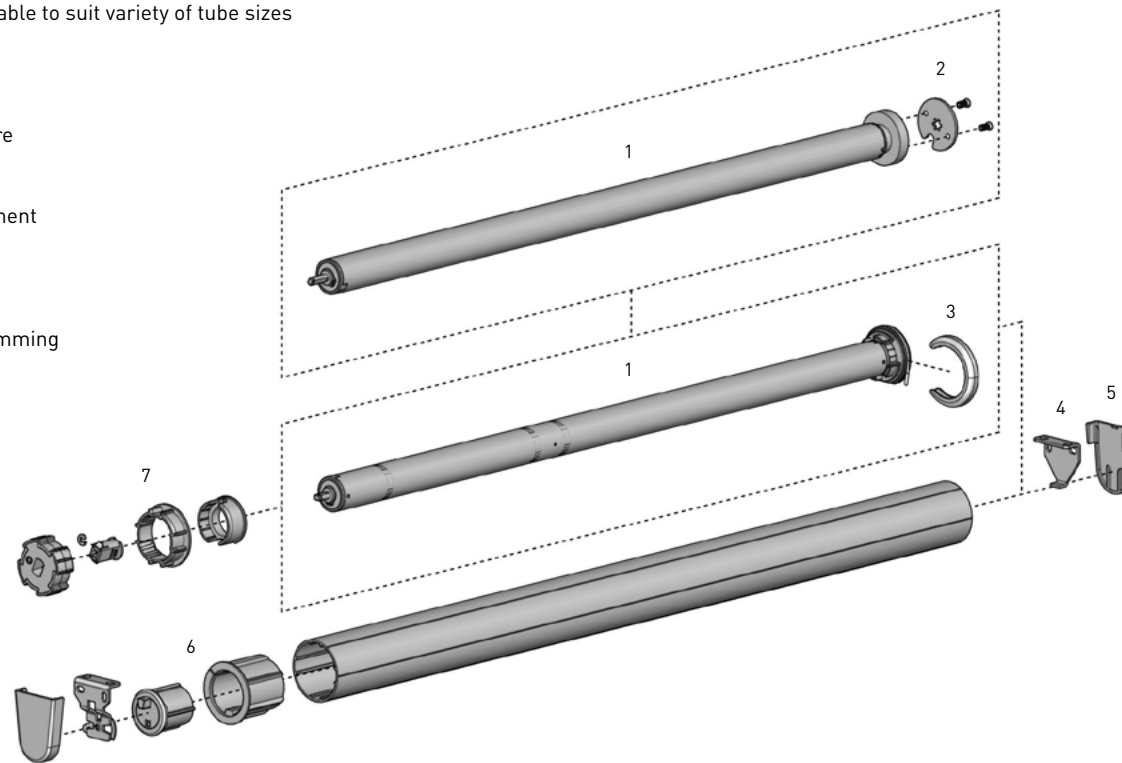
- Thinner Motor Head
- Recessed mounting hooks

PRODUCTION & ASSEMBLY FEATURES

- Smaller Motor end deduction
- Crown, drive and adapters available to suit variety of tube sizes

FUNCTIONAL BENEFITS

- 5V Micro USB Charging
- Antennae Wire Retention Feature
- Levelling control
- Simple limit setting and adjustment
- Favorite position
- 3 operational speed settings
- ARC protocol for simple programming
- 2-WAY RF communication

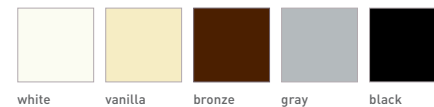


SYSTEM INDEX

1	Automate Motor 28mm MT01-1328-069001 - Li-ion ZERO Q2.0 MTDCRFQ28-2.0 - DCRF Q2.0
2	Motor Adaptor + Screws DCRF ONLY MTAD-252835-RS + SLAMSCREW
3	Motor Cap MT03-0205-xxx001 - ZERO ONLY
4	Brackets RB360xx - R8 1½" Set RB380xx - R8 2" Set RB390xx - R8 2-¼" Set RB560xx - R16 1½" Set - ZERO ONLY RB580xx - R16 2" Set - ZERO ONLY RB590xx - R16 2¼" Set - ZERO ONLY
5	Bracket Covers RBPC360xx RBPC380xx
6	Pin End + Adapter REP53xx - 1½" tube REP53xx + RA2xx - 2" tube + Adapter
7	Crown and Drive Kit MTCRDR-28-1.5 - 1½" tube MTCRDR-28-2 - 2" tube
8	Aluminum Tube RTEA4T## - 1½" tube RTEA5T## - 2" tube

- Size
xxx= Color

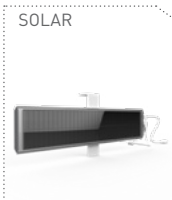
COLOR RANGE



SYSTEM UPGRADES

- CASSETTE 80/100/120
- FASCIA 3"/4"/5"
- LINK SYSTEM
- POCKETS 3"/4"/5"/6"

CONTROL OPTIONS

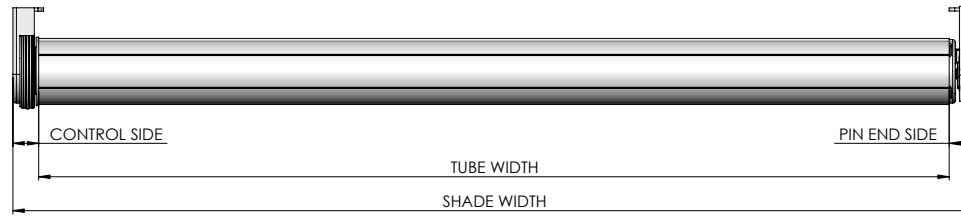


PRODUCT OPTIONS



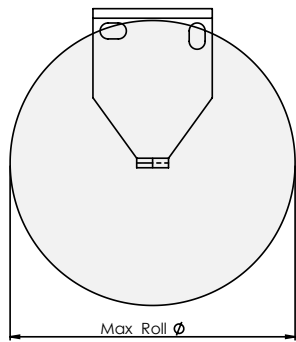
SPECIFICATIONS

DEDUCTION CHART



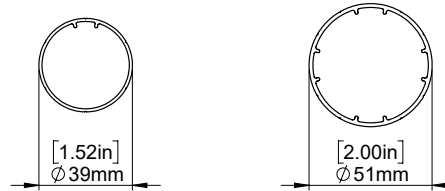
MOTOR	TUBE	BRACKETS	LIGHT GAP			MINIMUM SHADE WIDTH	
			CONTROL END	PIN END	OVERALL		
MT01-1328-069001	1 1/2"	With Covers	0.63" [16mm]	0.71" [18mm]	1.34" [34mm]	MT01-1328-069001	2.46' [0.750m]
		No Covers	0.55" [14mm]	0.63" [16mm]	1.18" [30mm]		
MTDCRFQ28-2		With Covers	0.75" [19mm]	0.71" [18mm]	1.46" [37mm]		
		No Covers	0.67" [17mm]	0.63" [16mm]	1.30" [33mm]		
MT01-1328-069001	2"	With Covers	0.63" [16mm]	0.67" [17mm]	1.30" [33mm]	MTDCRFQ28-2	1.97' [0.600m]
		No Covers	0.55" [14mm]	0.59" [15mm]	1.14" [29mm]		
MTDCRFQ28-2		With Covers	0.75" [19mm]	0.67" [17mm]	1.42" [36mm]		
		No Covers	0.67" [17mm]	0.59" [15mm]	1.26" [32mm]		

MAX ROLL



BRACKET	MAX ROLL SIZE
RB360xx	2.57" [69mm]
RB380xx	3.65" [92mm]
RB390xx	4.00" [101mm]
RB560xx	3.00" [76mm]
RB580xx	4.00" [101mm]
RB590xx	5.50" [139mm]

TUBE SPECS.



1 1/2" Tube

Code: RTEA4T12 (with tape)
RTEA4U12
RTEA4T16 (with tape)
RTEA4U16

Length 12', 16'
(3.66m, 4.88m)

2.0" Tube

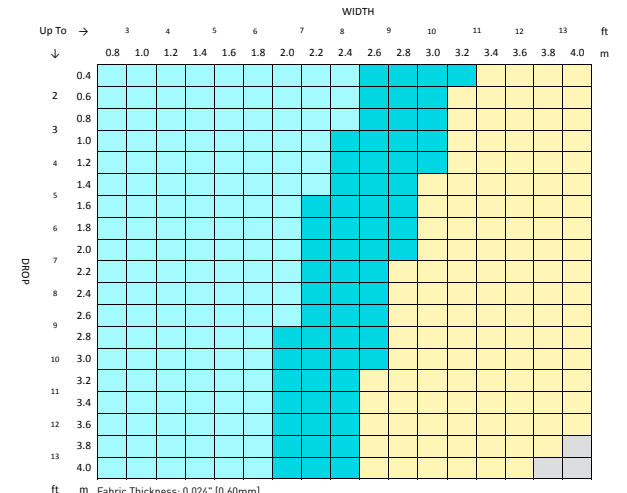
Code: RTEA5T12 (with tape)
RTEA5U12
RTEA5T16 (with tape)
RTEA5U16

Length 12', 16'
(3.66m, 4.88m)

1 1/2" TUBE		2" TUBE	
Ø WIDTH	MAX DROP	Ø WIDTH	MAX DROP
7.87" [2.40m]	2.62' [0.80m]*	10.50" [3.20m]	1.31' [0.40m]*
5.91" [1.80m]	13.12' [4.00m]*	7.87" [2.40m]	13.12' [4.00m]*

* Recommended Max Drop. Exceeding this value may cause fabric tracking issues

SYSTEM CAPACITY



Fabric Thickness: 0.024" [0.60mm]
Fabric Density: 12.39oz/yd² [420gsm]
Weight Bar: D30 Silent Medium Aluminium Bottom Rail

CONTROL	TUBE	LINK SYSTEM
28mm Motor	RTEA4TH# - 1.5"	OUTSIDE SPECIFICATIONS
	RTEA5TH# - 2.0"	