

R-Series 2.0Nm | 28mm

The motorized 28mm 2.0Nm R-Series roller shade system offers multiple tubes to suit a variety of applications. Featuring ARC (Automate Radio Communication), the 28mm 2.0Nm R-Series system provides an intelligent Li-ion battery powered solution.

AESTHETICAL FEATURES

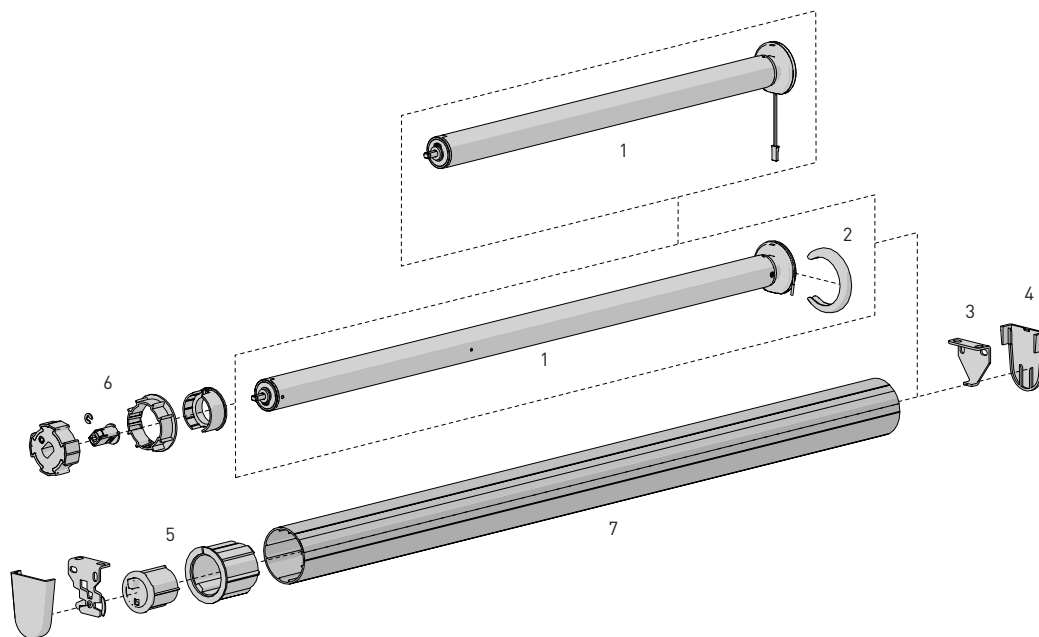
- Thinner Motor Head
- Motor cap to color match with brackets

PRODUCTION & ASSEMBLY FEATURES

- Smaller Motor end deduction
- Crown, drive and adapters available to suit variety of tube sizes

FUNCTIONAL BENEFITS

- 5V Micro USB Charging
- Antennae Wire Retention Feature
- Levelling control
- Simple limit setting and adjustment
- Favorite position
- 3 operational speed settings
- ARC protocol for simple programmin
- 2-WAY RF communication



SYSTEM INDEX

- Automate Motor | 28mm
- 1 MT01-1228-069002 - DCRF 2.0Nm 40rpm 12V ZERO
 - MT01-1328-069001 - Li-ion 2.0Nm 20rpm 5V ZERO
 - MT01-1328-069004 - Li-ion 2.0Nm 20rpm 5V ZERO CT15
 - MT01-1328-069006 - Li-ion 2.0Nm 28rpm 5V ZERO CT15

- Motor Cap
- 2 MT03-0502-027001 - Chrome
 - MT03-0502-034001 - Satin Nickel
 - MT03-0502-043001 - Brass
 - MT03-0502-059001 - Black
 - MT03-0502-077001 - White
 - MT03-0502-079001 - Antique Bronze
 - MT03-0502-091001 - Gun Metal

- Brackets
- 3 RB360xx - R8 1½" Set
 - RB380xx - R8 2" Set
 - RB390xx - R8 2-¾" Set

- Bracket Covers
- 4 RBPC360xx
 - RBPC380xx

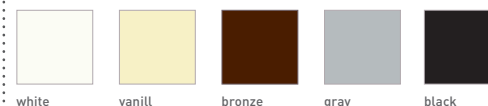
- Pin End + Adapter
- 5 REP53xx - 1½" tube
 - REP53xx + RA2xx - 2" tube with Adapter

- Crown and Drive Kit
- 6 MT03-0110-069002 - 1½" tube
 - MTCRDR-28-2 - 2" tube

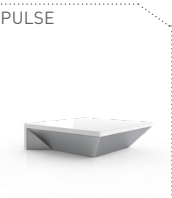
- Aluminum Tube
- 7 RTEA4T## - 1½" tube
 - RTEA5T## - 2" tube

- Size
xxx= Color

COLOR RANGE



CONTROL OPTIONS



OPTIONS



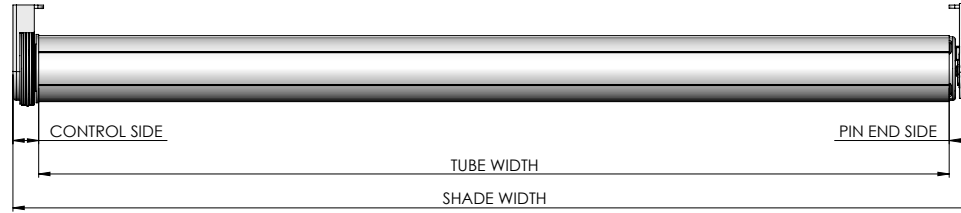
CHARGERS

SYSTEM UPGRADES

- CASSETTE 80/100/120
- FASCIA 3"/4"/5"
- LINK SYSTEM
- POCKETS 3"/4"/5"/6"

SPECIFICATIONS

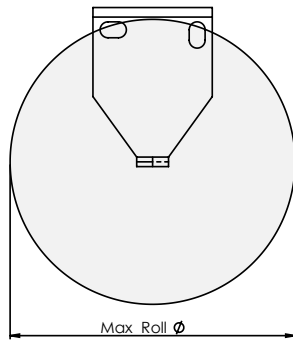
DEDUCTION CHART



| MINIMUM SHADE WIDTH | | |
|---------------------|------|-------------------|
| MOTOR | TUBE | MINIMUM LENGTH |
| MT01-1228-069002 | 1.5" | 20-1/4" [515mm] |
| | 2.0" | 20-1/16" [509mm] |
| MT01-1328-06900X | 1.5" | 28-11/16" [728mm] |
| | 2.0" | 28-7/16" [722mm] |

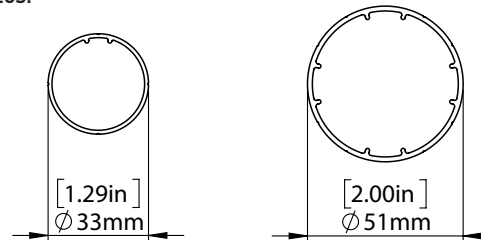
| TUBE | MOTOR | BRACKETS | LIGHT GAP | | |
|--------|-------|-------------|--------------|---------------|----------------|
| | | | CONTROL END | PIN END | OVERALL |
| 1 1/2" | ALL | With Covers | 9/16" [15mm] | 11/16" [17mm] | 1-1/4" [32mm] |
| | | No Covers | 1/2" [13mm] | 9/16" [15mm] | 1-1/8" [28mm] |
| 2" | ALL | With Covers | 5/8" [16mm] | 11/16" [17mm] | 1-5/16" [33mm] |
| | | No Covers | 9/16" [14mm] | 9/16" [15mm] | 1-1/8" [29mm] |

MAX ROLL



| BRACKET | MAX ROLL SIZE |
|---------|---------------|
| RB360xx | 2.57" [69mm] |
| RB380xx | 3.65" [92mm] |
| RB390xx | 4.00" [101mm] |

TUBE SPECS.



1 1/2" Tube

Code: RTEA4T12 (with tape)
RTEA4U12
RTEA4T16 (with tape)
RTEA4U16

Length 12', 16'
(3.66m, 4.88m)

2" Tube

Code: RTEA5T12 (with tape)
RTEA5U12
RTEA5T16 (with tape)
RTEA5U16

Length 12', 16'
(3.66m, 4.88m)

| MOTOR | MAX LIFTING CAPACITY | | MAX DROP* |
|-------|----------------------|--------------------|---------------|
| | 1-1/2" TUBE | 2" TUBE | |
| 2.0Nm | 23.3lbs [10.6kg] | 17.6lbs [8.0kg] | 13.1' [4m] |

* Recommended Max Drop. Exceeding this value may cause fabric tracking issues

SYSTEM CAPACITY

